

Newsfeed No. 31

October 2021



Interested in getting involved in the commissioning of the new ASB? Become a Commissioning Champion!

If you work in one of the Prince of Wales Hospital departments that are moving into the new Acute Services Building (ASB), you can support and inspire your peers to get ready for the move by becoming a Commissioning Champion.

What is a Commissioning Champion?

Commissioning Champions have an integral role to play in communicating important information about the new ASB to staff, to ensure they are adequately prepared for the transition into their brand new workspace.

As a Commissioning Champion, you will be an essential link between the Randwick Campus Redevelopment team and your department or unit, generating excitement and anticipation for the opening of the new building.



You will support your colleagues to become familiar with their new workspace, understand their new models of care and ultimately prepare them for the big move!

To express interest in being a Commissioning Champion, contact your Department Manager or [email the redevelopment team](#).

Why become a Commissioning Champion?

- Be an integral part of the first stage of the Randwick Campus Redevelopment, which is the catalyst project for expanding world-class health, research and education facilities at the Randwick precinct
- Receive first-hand access to information about the new ASB throughout all phases of the hospital commissioning process
- Ensure that your team are given accurate and timely advice on the commissioning process
- Be seen as a leader, role model and driver for positive change
- Work with other Commissioning Champions across all moving departments and be part of a broader group of passionate individuals

Departments moving into the ASB in 2022 will include:

- Emergency Department
- Intensive Care Unit
- Operating Theatres
- Central Sterilizing Services Department
- Psychiatric Emergency Care Centre
- Medical Assessment Unit
- Haematology and Oncology
- Aged Care (Acute and Rehabilitation)
- Orthopaedics
- Respiratory and Infectious Diseases
- Clinical Neurosciences

For more information:

 randwickcampusredevelopment.health.nsw.gov.au

 randwickcampusredevelopment@health.nsw.gov.au

 1800 571 866

Get 'Wheely' Confident! Free cycle skills courses resume

Randwick Hospitals Campus staff are once again invited to register for a [free bike riding course](#), aimed at developing the skills and confidence to cycle safely around our neighbourhoods, and promote cycling as a safe, healthy and accessible mode of transport.

Randwick City Council, in collaboration with the Randwick Health & Innovation Precinct partners, is providing a series of cycling skills courses to the communities that live and work in the local Randwick area. Re-commencing at the end of October, the courses will offer a range of tips to develop the confidence to get around Randwick and beyond by bike.

Course provider, Pedal Set Go are excited to get back on their bikes and help the local community increase their riding ability, after the courses were placed on hold back in June.

Cycling confidence levels rose significantly after completing a single course, with previous course participants reporting that they were planning more cycling activity as a result of the courses and 100% of participants saying they would recommend the course to others.

[Book in your Cycle Skills Course now](#). Courses will be held at various venues across Randwick, starting from **Saturday 30 October**.

"This course, along with the confident rider course has really changed my outlook and I am now riding on the road, safely, a lot more often."

Course participant



What are the benefits of riding to work?

- Maintain a healthy lifestyle; a 30 minute cycle each day will improve your health and wellbeing
- Reduce your carbon footprint; switching your commute to cycling will ease congestion and help with pollution
- Avoid wait times and public transport costs

Available courses includes:

- Back on your bike sessions (bike and helmet provided)
- Confident city rider (intermediate)
- Local routes rides – get to know your local area by bike
- Maintenance and repair skills sessions
- Electric bike riding skills (bike and helmet provided)

For more information:

 randwickcampusredevelopment.health.nsw.gov.au

 randwickcampusredevelopment@health.nsw.gov.au

 1800 571 866

Staff workshops underway for new End of Trip facility

Staff are working closely with the Randwick Campus Redevelopment project team to finalise design details for the new End of Trip (EoT) facility to ensure it best meets the needs of staff wishing to cycle, run or walk to work.

When it opens in 2022, the new facility will be open to all Randwick Hospitals Campus staff free of charge. The EoT facility will provide secure bike racks, lockers, showers and men's and women's change rooms, as well as other amenities.

The facility will be conveniently located within the main hospital carpark and will be accessible from Barker St and Botany St via Hospital Rd and Magill St.

The EoT is an important component of the [Green Travel Plan](#), in its efforts to reduce the number of cars travelling to and from the Randwick Hospitals Campus, and provide active and healthy travel options for staff.

More information about the EoT and how you can register your interest to gain access will be made available soon.

In the meantime, if you're interested in improving your cycle skills, register for an upcoming bike course, as advertised above!

Staff and the community will be advised well in advance of any construction activity to ensure there is as little disruption as possible.

Pictured: Participants on a cycle skills course earlier this year



For more information:



randwickcampusredevelopment.health.nsw.gov.au



randwickcampusredevelopment@health.nsw.gov.au



1800 571 866

Get snapping! Join the Photo Finish photo competition

Health Infrastructure is proud to be supporting the Sydney Children's Hospitals Network Photo Finish competition, and Randwick Hospitals Campus staff and the local community are invited to submit their smartphone pics now!

They're looking for photos which reflect the themes of 'Around the House', 'Nature' or 'People and Places', and entry is open to all age groups, with special prizes for kids under 8, under 12 and under 18. It's the perfect way to showcase your photography skills and get your littlest family members involved.

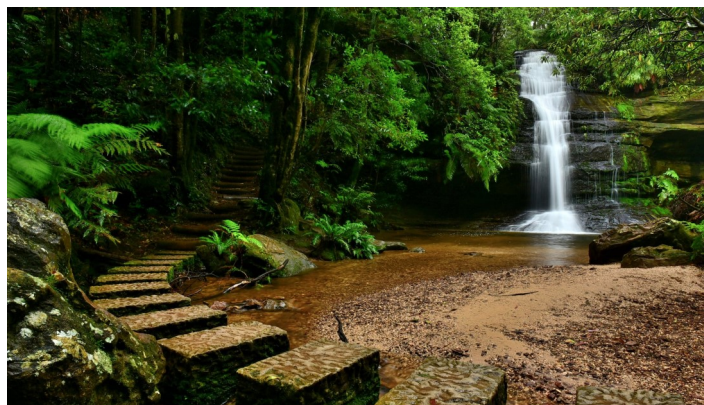
The Photo Finish digital photography competition is open to all Randwick Hospitals Campus staff, patients, volunteers and visitors, as well as people who live, work or study near Sydney Children's Hospital, Randwick or The Children's Hospital at Westmead.

Framed winning and finalist entries will be exhibited during December 2021 at Sydney Children's Hospital, Randwick and The Children's Hospital at Westmead. These will be returned to the entrant at the end of the exhibition.

The competition closes on **14 November 2021**. For more information, please visit the [SCHN website](https://www.schn.health.nsw.gov.au).



Pictured below: Photo Finish competition entries & descriptions



"The "Pool of Siloam" in the Blue Mountains taken summer of 2020. It is a beautiful calming cool place to sit or swim and listen to the birdlife and water cascading over the cliff tops."

Photo captured by Michael



"Summer is a new addition to our neighbourhood. Photographing from her eye-level made this puppy feel comfortable. In my pet portraits I try to capture Summer's personal uniqueness and purity, as well as the character of the species she represents."

Portrait taken by Jamie

For more information:

 randwickcampusredevelopment.health.nsw.gov.au

 randwickcampusredevelopment@health.nsw.gov.au

 1800 571 866

Construction update for the new Acute Services Building

Construction work continues to progress, with the façade to the Acute Services Building now complete.

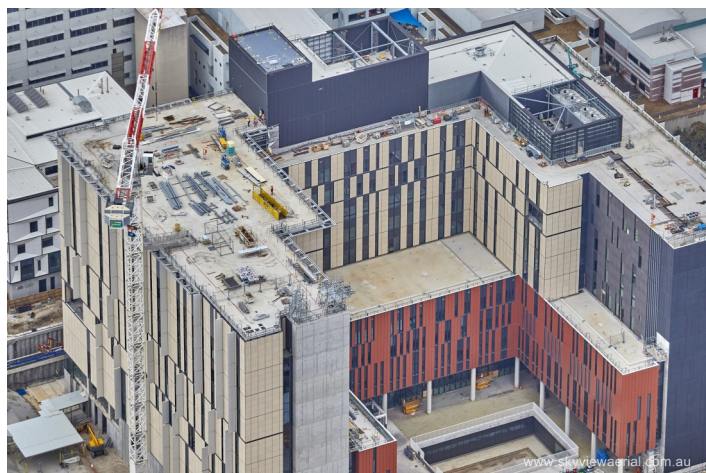
Other progress includes:

- Fitout, joinery and services progressing across all ten floors
- Continued external painting
- Continued pavement slabs to the Emergency Department and loading dock
- Link bridge preparation works continue with column construction progressing

- Stormwater upgrade works are occurring on Hospital Road
- Communications services work progresses throughout the Prince of Wales Hospital Campus

As COVID-19 restrictions continue to ease, workforce numbers are increasing on site. Additional safety controls will remain on site to manage COVID-19 including COVID marshals, enhanced PPE, QR coding and contact tracing lanyards for all workers.

Pictured below: Recent aerial shots of the ASB



This monthly newsfeed provides updates on the Randwick Campus Redevelopment, featuring stories and highlights from the Randwick Hospitals Campus partners, as they bring together world-class education, research and healthcare through the creation of the Randwick Health & Innovation Precinct.

Have a question about the Randwick Campus Redevelopment?

Please send any questions you have to randwickcampusredevelopment@health.nsw.gov.au

Or call **1800 571 866**

For more information:



randwickcampusredevelopment.health.nsw.gov.au



randwickcampusredevelopment@health.nsw.gov.au



1800 571 866