

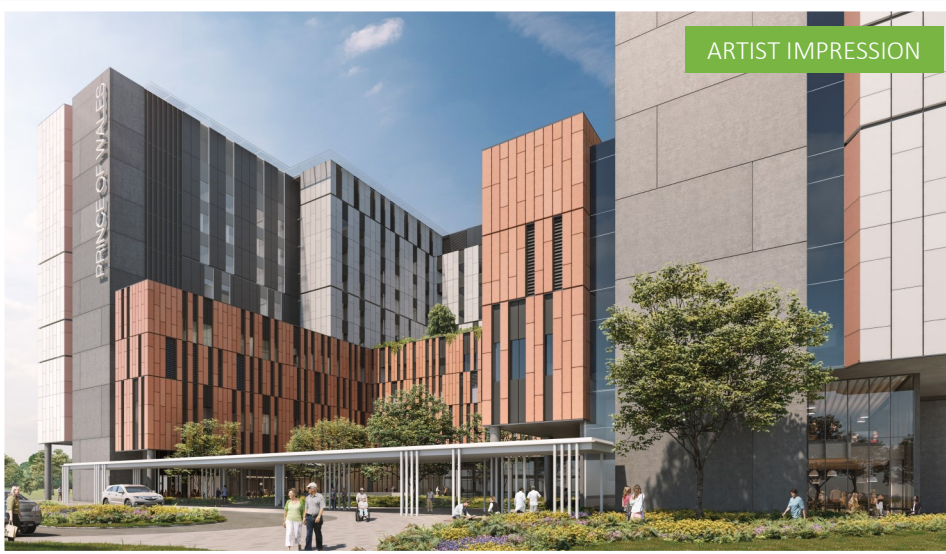
## Improving the health and wellbeing of our communities

The NSW Government is investing \$720 million to redevelop the Prince of Wales Hospital and Randwick Hospitals' Campus, and strengthen Randwick as a world-leading Precinct for health and wellbeing, research, education and teaching.

As part of the redevelopment, there will be a new Acute Services Building, due for completion in 2022, which will provide a range of innovations and improvements to greatly benefit patients, staff and the community, and support comprehensive approaches for optimising health outcomes.

The Acute Services Building will include:

- A new adult Emergency Department.
- An expanded Psychiatric Emergency Care Centre, adjacent to the ED.
- Ten inpatient units that will replace ageing infrastructure with contemporary facilities to support new models of care. The new units will provide a higher proportion of single rooms to improve the patient experience and outcomes.
- An expanded Intensive Care Unit.
- New operating theatres and an expanded sterilising service for the campus.
- A new helipad to support all the hospitals on campus.
- A Medical Assessment Unit, providing rapid assessment of patients directly referred from the community, which will:
  - ◇ support integration of health services in the community, e.g. Hospital in the Home, Post Acute Care Services and aged care facilities.
  - ◇ provide oversight of hospital and community functions.
  - ◇ enable early identification and intervention for patients with chronic and complex conditions to support community-based care.
- Education and research spaces that are embedded within the clinical areas to support collaborative clinical research and innovation.



*We are implementing new innovations and technology to improve the care we provide and the overall wellbeing of our community*

## Development Deliverables



### Integrated Patient Journey

The ASB will facilitate improved coordination of care between the hospital and the community, which will in turn benefit the patient journey.



### Mindfulness to Wellbeing

There will be thoughtful and respectful spaces designated for patients, their families and their carers. These spaces will aim to enhance individual's wellbeing.



### Innovation and Excellence

There will be new digital operating theatres which are fit for emerging intraoperative technology that assists with patient diagnosis and treatment.



### Best-Practice Treating Spaces

Each Inpatient Unit will provide a higher proportion of single rooms, and include best practice fixtures and equipment to improve the patient experience and outcomes.



### Patient Focused Spaces

There will be therapeutic spaces that patients will have priority access to. This will help patients feel more comfortable during their stay in hospital.



### Fit for Purpose

The ASB will provide improved support for clinical care, patient privacy and patient visibility which better aligns with contemporary models of care.



### Population Based Care

There will be more treatment spaces and resuscitation bays which address population demands for now and in the future.



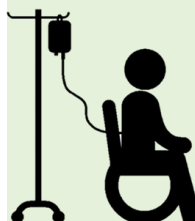
### Making it Modern

The ASB will be a world-class building with modern facilities that will greatly benefit staff and visitors.



### Latest and Greatest

The ASB will home state-of-the-art information technology and clinical equipment which will enhance patient outcomes.



### Leading the Way

The ASB will support seamless integration between academic research and clinical innovation that will optimise service delivery and patient care.