

Newsfeed No. 56

March 2024



Lizzie Cox and Harriett Carroll on the SCH1/MCCCC site

Celebrating the women helping to deliver our life-changing projects

Every March, communities and workplaces around the world celebrate International Women's Day and the social, economic, cultural, and political achievements of women globally.

Women in Construction Week is also acknowledged in March, and this year the NSW Government is highlighting key initiatives helping to increase opportunities for women in construction. Proudly, a few familiar faces from our own Sydney Children's Hospital Stage 1 and Minderoo Children's Comprehensive Cancer Centre project site are featured.

Check out page 2 to see the diverse role women play in the delivery of key infrastructure projects.



Also in this edition:

- ✓ ASB celebrates first anniversary
- ✓ New laboratory for translational research
- ✓ Inside the future SCH1/MCCCC building
- ✓ Big plans for HTH ground floor spaces
- ✓ Out and about with the project team
- ✓ Save the date – upcoming special event



March 2023

The projects on the northern portion of the Randwick Campus Redevelopment site are rising from the ground up – what a difference a year makes!



March 2024

For more information:

 randwickcampusredevelopment.health.nsw.gov.au

 randwickcampusredevelopment@health.nsw.gov.au

 1800 571 866

Hospital projects leading the charge for women in construction

The NSW Government's Women in Construction Infrastructure Skills Legacy Program (ISLP) is piloting new targets to increase the number of women in construction, with hospital redevelopment projects playing a key role.

The Women in Construction focused ISLP initiative involves embedding dedicated project officers to work across a portfolio of government infrastructure projects throughout regional and metropolitan NSW.

The project officers support the employment, upskilling and retention of women in the construction sector, working to improve the culture within the industry and help meet the new targets of four per cent women in trades (up from two per cent) and seven per cent women in non-traditional roles.

The Sydney Children's Hospital Stage 1 and Minderoo Children's Comprehensive Cancer Centre (SCH1/MCCCC) is one of six Health Infrastructure projects currently trialling the new targets and implementing strategies to attract and retain more women in construction.

Principal builder for the project, John Holland Group (JHG), currently has a 37.5 per cent female representation within the project leadership team, and a significant proportion of the project team are women in non-traditional roles.

JHG Project Director, Lizzie Cox, is part of the company's project senior leadership team and says the ISLP initiative is already making a difference on the SCH1/MCCCC site.

"Through the ISLP program, a dedicated resource has been employed on the project to support the project team and subcontractors with sourcing, employing and retaining women through a range of different initiatives that will better support women in the industry – from subcontractor forums to discuss barriers and opportunities, through to partnerships with community organisations," said Lizzie.

"The project currently boasts nine percent women in non-traditional roles and four percent women in trade roles, which is great progress as onsite works begin to ramp up to peak workforce and specialist trade opportunities expand."

The SCH1/MCCCC project is also participating in a pilot initiative of the Construction Industry Culture Taskforce, which aims to develop a new Culture Standard for the industry to help lift productivity and performance and address issues of excessive work hours and fatigue, poor mental health and lack of diversity among the construction workforce – benefitting both men and women across the sector.

The pilot program seeks to assess the benefits of reduced work hours, shift flexibility, and access to mental health and wellness programs, and includes leadership training on productivity, capacity and retention rates.

As part of the program, the SCH1/MCCCC project has committed to a five-day work week with standard site operating hours of Monday to Friday, and is developing flexible work initiatives to support childcare and school drop-off.

Pictured on site: JHG Project Director, Lizzie Cox (right) with Undergraduate Site Engineer, Harriett Carroll, who has joined the project at just 18 years of age while studying construction management at nearby UNSW.





The Respiratory and Infectious Diseases team celebrated their one year anniversary with a team lunch and bake-off!

Acute Services Building celebrates its first birthday!

It is hard to believe that 12 months have passed since the first patient arrived in the Prince of Wales Hospital Acute Services Building (ASB) as part of what was an historic milestone for South Eastern Sydney Local Health District and the broader Randwick community.

The Respiratory and Infectious Diseases ward was the first inpatient unit to open its doors back in March 2023.

A year on, Respiratory and Infectious Diseases Nurse Unit Manager, Kate Frampton, says she is proud to see the staff thriving in their new ward.

“We are able to provide care to our patients in an environment that has been purpose-built, and is clean, bright and functional,” said Kate.

The next major stage in the redevelopment project will see the commissioning and subsequent opening of the surgical wards on Level 6, along with construction of new operating theatres on Level 1.

The much anticipated 10-levels of UNSW education and research spaces are also set to open in the coming months. Directly adjoining ASB clinical spaces, the integrated UNSW spaces

will house clinical prototyping, testing laboratories, research zones and more.

Prince of Wales Hospital General Manager, Jennie Barry, said the new and expanded facilities have had a positive impact on patients and staff.

“Seeing this beautiful, state-of-the-art building become part of daily life on our hospital campus is so rewarding. I thank our passionate staff who have embraced the new technology and adapted to new and innovative ways of delivering healthcare,” said Jennie.



Acute Services Building western facade

For more information:



randwickcampusredevelopment.health.nsw.gov.au



randwickcampusredevelopment@health.nsw.gov.au



1800 571 866

New laboratory to support haematology translational research

On Level 4 of the UNSW's spaces within the Acute Services Building (ASB) extension, a new laboratory will support translational research – from basic and pre-clinical studies through to patient care.

Located on the same floor as the ASB's aged care rehabilitation and acute aged care spaces, as well as the haematology and oncology units, the new laboratory will support the integration of research activity with clinical care.

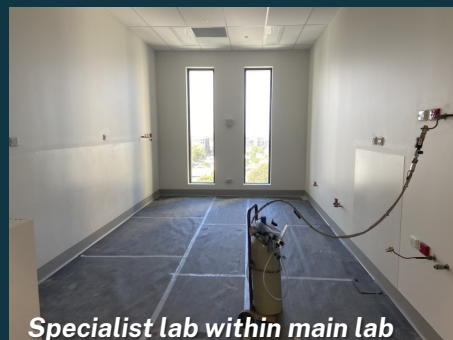
In this lab, researchers might focus on activities like advanced tissue engineering, printing of biomaterials and use of novel technologies for therapeutic interventions.

The space will also provide opportunities for collaboration with industry partners sharing similar goals to the health precinct.

With internal fit-out almost complete, the UNSW spaces are set to become operational from mid-2024.



Fit-out of the future Level 4 laboratory space is progressing well, with the installation of joinery, services and sinks underway within the main lab, and the specialist laboratory being prepared for benches and equipment.



For more information:

 randwickcampusredevelopment.health.nsw.gov.au

 randwickcampusredevelopment@health.nsw.gov.au

 1800 571 866

Inside the future SCH1/MCCCC...

Main works construction has been underway on the new Sydney Children's Hospital Stage 1 and Minderoo Children's Comprehensive Cancer Centre (SCH1/MCCCC) building for approximately 18 months, and the structure will soon reach full height!

Activities will then shift from concrete pours to the continued installation of the building's colourful glass exterior and internal fit-out.

Staged works for the future link bridges between the new building, the existing hospital and Acute Services Building will also continue during the coming months.

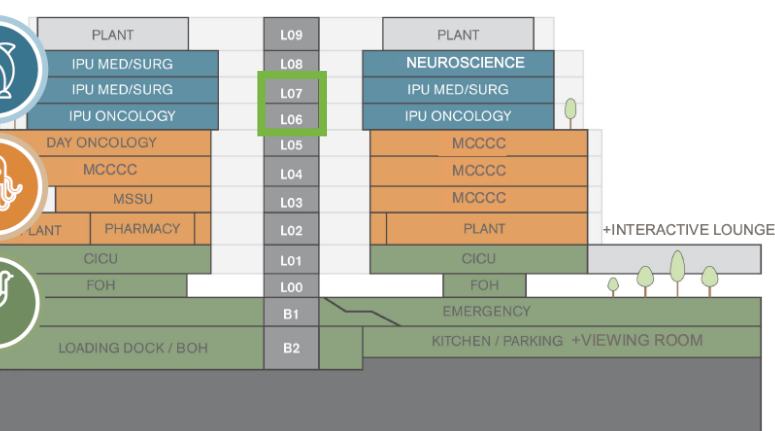
In this edition of Newsfeed, we're taking a closer look at the next two levels, which will be home to a range of inpatient units for children of all ages. Be sure to check out [previous editions](#) for information about what will be housed on lower levels of the building...

Level 6

The Oncology Inpatient Units will feature on this level, with the new wards boasting single rooms and a separate carer space. The units will include areas for occupational therapy, play therapy and quiet study, along with dedicated adolescent spaces, parent lounges, kitchens and laundry facilities. The floor will also feature an Infusionarium, where patients can receive treatment while immersed and distracted by virtual reality and video games. Level 6 will also house a Bone Marrow Transplant Unit, with specialised rooms for immunocompromised patients.



Level 6 construction progress



Stacking diagram of SCH1/MCCCC building

Level 7:

New inpatient facilities for babies and toddlers requiring medical and surgical stays will be located on this level, along with children's and adolescents' medical and surgical inpatient spaces, including recreation, family rooms and amenities. The facilities will focus on integrated, multi-specialty care, allowing clinical teams to collaborate in solving medical problems. The floor will also feature a purpose-built diagnostic and assessment unit with monitoring and reporting technology for sleep-related disorders.



Level 7 construction progress

For more information:

 randwickcampusredevelopment.health.nsw.gov.au

 randwickcampusredevelopment@health.nsw.gov.au

 1800 571 866



Artist impression of the Health Translation Hub's ground floor atrium and foyer space

Inspiring the Randwick Precinct through exhibition and art

The UNSW Health Translation Hub (HTH) will bring together educational and medical researchers, clinicians, educators, industry partners and public health officials to drive excellence and support the rapid translation of innovative research and education into improved patient care and better community health outcomes.

With the internal design of the building well underway, detailed discussions are shaping the HTH's ground floor design, which aims to inspire our wider community through interactive displays, events and artistic experiences.

The southern end of the HTH ground floor will include a publicly accessible events and showcase space. Visitors will learn about the societal impact of the HTH community and wider university's research and health practices.

Through ground floor exhibitions, collections, digital technology and discussion, the HTH will encourage our community to think deeply about the connections between science, medicine, life and art.

A dedicated seminar space will cater to events for approximately 120 people, and the ground floor will also have a dedicated reception area and retail offerings for visitors.

Outside, an expansive 2,500 square metres of north-facing open public space will help to create an engaging and welcoming place for staff, students, patients, industry partners and the public.

Construction of the HTH is progressing to schedule, with expected completion in late 2025.



Artist impression of the UNSW HTH plaza

For more information:

 randwickcampusredevelopment.health.nsw.gov.au

 randwickcampusredevelopment@health.nsw.gov.au

 1800 571 866

Out and about with the redevelopment project teams and stakeholders

There's always something happening across our projects – from activations to events and site visits, check out what some of the team has been up to recently...



Project communications and engagement team members Chelsea Wade (Health Infrastructure) and Kate Somers (Sydney Children's Hospitals Network) channeled their inner artist to host a fun construction-themed craft activity for hospital patients and their families in late February.

Part of a regular program of activations in the redevelopment pop-up space located in the main entrance area of the existing hospital, the initiative saw dozens of children exploring their creative side and enabled parents to ask questions about the new hospital project and how it will enhance kids' healthcare into the future.



Fit-out of the UNSW extension to the eastern façade of the Prince of Wales Hospital Acute Services Building will soon be completed.

To be known as the **UNSW Integrated Acute Services Building**, the 10-level facility will boast direct connections to key clinical areas of the Prince of Wales Hospital, along with a main entry point (pictured) via the Ainsworth Plaza space, adjacent to the existing Ainsworth Building and future children's hospital building currently under construction.

UNSW teams have regularly been visiting the spaces to view progress and prepare for operational commissioning in coming months, before the planned opening mid-year.



There was an amazing turn-out on the SCH1/ MCCCC construction site for International Women's Day celebrations, with almost every one of the project's current 500-strong workforce joining in.

Did you know?

More than 25 women across a variety of trades and specialty fields are part of the current team on site!



For more information:



randwickcampusredevelopment.health.nsw.gov.au



randwickcampusredevelopment@health.nsw.gov.au



1800 571 866

SAVE THE DATE: WEDNESDAY 24 APRIL 2024

'When do I breathe?' Public procession

The Randwick Health & Innovation Precinct (RHIP) invites you to join a one-time special event from 5.30pm on Wednesday 24 April – *'When do I breathe?'* by award-winning artist [Lauren Brincat](#).

This free public event will shape new paths through the Precinct's streets, connecting communities in collaborative action.

Commencing at UNSW's Scientia Lawn, the procession will move through the Precinct's streets at sunset. A large fabric sculpture will provide a connective thread that links participants and the broader community. Audiences will witness orchestrated harmonies, including breath and movement.

'When do I breathe?' is the result of a year-long engagement with local communities by this celebrated artist who has previously worked in collaboration with Sydney Dance Company at Sydney Opera House and at Carriageworks for the [Biennale of Sydney](#).

Lauren Brincat's work is also represented in the collections of leading institutions across the country, including the Art Gallery of New South Wales and Museum of Contemporary Art Australia.

This major new work has been created in collaboration with sound artist, [Evelyn Ida Morris](#); UNSW Choral Director, [Sonia Maddock](#); and choreographer, [Charmene Yap](#); and includes 30 community members who will perform within the procession.

For visitors travelling to the Precinct, Lauren Brincat's sunset procession can be easily accessed via Light Rail. Scientia Lawn is close to the UNSW High Street stop on the L2 Randwick Line, or via a short walk from the NIDA stop on the Kensington Line.

To register for this exciting and unique event, please visit [Eventbrite](#).



This initiative is funded by Transport for NSW's Safer Cities program, which is investing \$30 million over two years to help improve perceptions of safety in our cities and towns, particularly for women, girls and gender diverse people.

Proudly funded by the NSW Government in association with Transport for NSW and Create NSW.

Proudly funded by



Learn more about RHIP's partners, purpose and impact at rhip.org.au, and if you haven't already, follow RHIP on [LinkedIn](#), [Twitter](#), and [YouTube](#) to keep up to date with what's happening across the Precinct.

For more information:

 randwickcampusredevelopment.health.nsw.gov.au

 randwickcampusredevelopment@health.nsw.gov.au

 1800 571 866