

## Newsfeed No. 23

August 2020

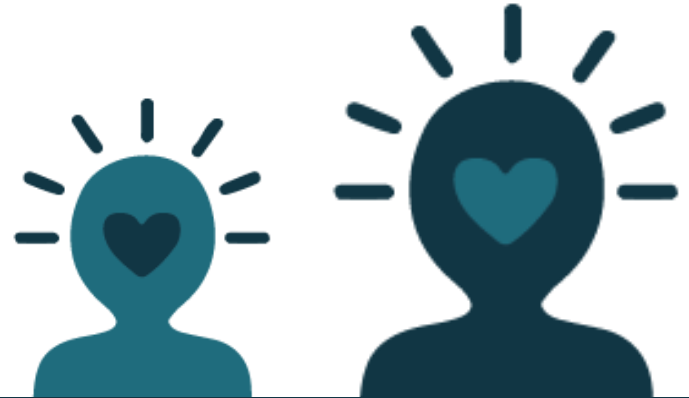


### In this edition:

- ✓ *COH-FIT and Mindgardens Survey*
- ✓ *Construction Update*
- ✓ *Team site visit*
- ✓ *Engaging families*
- ✓ *IASB Fun Facts*
- ✓ *Green Travel Plan Profiles*
- ✓ *Randwick Travel Census*



Have you seen how quickly the Integrated Acute Services Building is going up? This flyover was taken this month and shows the scale of the new building!



### Collaborative Outcomes Study of Health and Functioning during Infection Times

The Mindgardens Neuroscience Network integrates treatments and research for mental health, neurological and alcohol and drug disorders. The first initiative of its kind in Australia, Mindgardens is a collaboration between UNSW Sydney, Neuroscience Research Australia (NeuRA), the Black Dog Institute and South Eastern Sydney Local Health District Health.

Mindgardens is inviting all staff to participate in the world's largest survey of the effects of the COVID-19 pandemic on physical and mental health, to generate new insights that will drive better health policies and investments.

With more than 80,000 participants across 137 countries, the rapidly growing Collaborative Outcomes Study of Health And Functioning During Infection Times (COH-FIT) has the power to reveal similarities and differences in how people are responding to the pandemic across the globe, and suggest how these may be influenced by age, gender, culture, rate of community transmission, pandemic restrictions, or other factors.

The survey will take approx. 30 minutes. Access via [www.coh-fit.com](http://www.coh-fit.com)

For more information:

 [randwickcampusredevelopment.health.nsw.gov.au](http://randwickcampusredevelopment.health.nsw.gov.au)

 1800 571 866

 [randwickcampusredevelopment@health.nsw.gov.au](mailto:randwickcampusredevelopment@health.nsw.gov.au)

## Team Site Visit

Last week The Randwick Campus Redevelopment Change and Commissioning team had the opportunity to explore the initial structure of the Integrated Acute Services Building.

The team focused on level B2 that will form the new Emergency Department. They used floorplans to map out the design of the department and visualise the end state.

Next, clinical teams will be invited to explore the site to gather a sense of space and generate further discussion about the new services models created for the Integrated Acute Services Building.



## Community first: Engagement with families key to the Sydney Children's Hospital Stage 1 and Children's Comprehensive Cancer Centre

Throughout the month, the Randwick Redevelopment Team facilitated four online workshops via Zoom with families, donors, researchers and students to discuss how we can bring the concept of translational research to life for the future Children's Comprehensive Cancer Centre.

Translational research bridges the gap between patient care and clinical research by bringing together a number of specialists to refine and advance the application of a discovery. The families shared personal and moving stories with the group – highlighting the importance of communication, spaces for families to come together and the importance of health and wellbeing for carers. The insights from the workshops will be used to inform the design principals of the new Cancer Centre.



For more information:

 [randwickcampusredevelopment.health.nsw.gov.au](http://randwickcampusredevelopment.health.nsw.gov.au)

 1800 571 866

 [randwickcampusredevelopment@health.nsw.gov.au](mailto:randwickcampusredevelopment@health.nsw.gov.au)

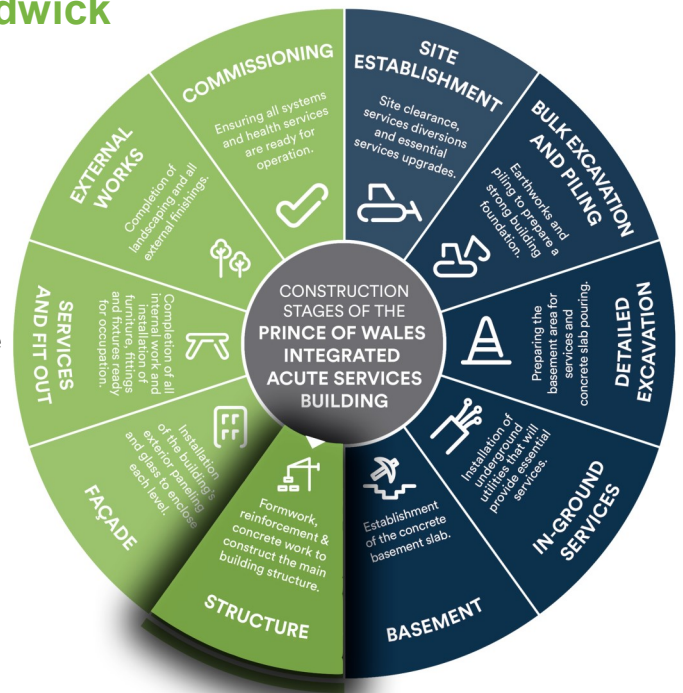
### Main structure of the Integrated Acute Services Building underway

Construction of the Integrated Acute Services Building main building structure is well underway with the installation of formwork, reinforcements and concrete work. As structure progresses, installation of the building's exterior panelling and glass will commence late September to enclose each level. The Integrated Acute Services Building will reach its full height in early 2021.

### Construction Management on the Randwick Campus Redevelopment

All major construction projects like the Randwick Campus Redevelopment comply with strict environmental and planning controls. During construction of the Integrated ASB we will work closely with all stakeholders as part of our commitment to zero unplanned disruptions. We are working closely with the Randwick Hospitals Campus, Emergency Services, Transport for NSW, UNSW Sydney and Randwick City Council to coordinate construction in the Randwick Precinct.

The project team understands the need to minimise impacts on the availability of local parking. A unique partnership has been established with the Royal Randwick Racecourse to provide site workers with access to an offsite parking facility. At its peak the Integrated ASB workforce will include approximately 600 construction workers, and this arrangement will help ensure parking remains available for Hospital staff, visitors, patients and the local community. All site workers are encouraged to utilise public transport as a sustainable travel option that minimises impacts on the local road network.



Construction progress diagram showing current structure stage of construction. The IASB is scheduled for completion in 2022'

### FUN FACTS

#### INTEGRATED ACUTE SERVICES BUILDING

- 1 Construction workforce will peak on the Randwick site to 600 workers in February 2021.
- 2 Tower crane 1 will be elevated to its full height of 75 metres by the end of the year.
- 3 Both tower cranes have a counterweight of 37 tonnes.
- 4 The Design team have reviewed the IASB design in more than 200 Project User Group Meetings to date.
- 5 More than 700 drawings have been issued for construction to date.

For more information:

 [randwickcampusredevelopment.health.nsw.gov.au](http://randwickcampusredevelopment.health.nsw.gov.au)

 1800 571 866

 [randwickcampusredevelopment@health.nsw.gov.au](mailto:randwickcampusredevelopment@health.nsw.gov.au)

## Biketober BUSINESS CHALLENGE

We are inviting all staff to cycle with us in The Biketober Business Challenge.

It's a fun and free challenge and there are lots of prizes that you can win just by taking part!

If you haven't cycled for years, don't worry! You only have to ride a bike for 10 minutes for your participation to count towards our team's score. You can ride anywhere, anytime during the Challenge.

If you already ride - you know how enjoyable riding is and how good it makes you feel. Here's your chance to get your workmates to experience how easy and enjoyable riding can be.

**Stay tuned for more information on how to join our team and take part in Biketober**

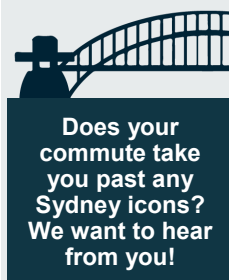


## Green Travel Profiles: Taking the scenic route

No commute is too far with one staff member at Prince of Wales Hospital cycling to work each day over the Sydney Harbour Bridge. The avid cyclist takes the 26km trip from Neutral Bay and enjoys some of the most iconic sites in Sydney - Neutral Bay Marina, The Harbour Bridge and Centennial Park.

He enjoys the ease of not having to worry about parking and the health benefits that come with cycling to work as well as the financial benefit of not owning a car, paying for tolls or parking.

Not only is cycling to work great for your physical health it is also great for your mental health and will help boost productivity at work!



## The Randwick Hospitals Campus Travel Census is back this September!

Last year over 2,300 Campus staff completed the Randwick Travel Census and told us about their journey to work. The new Integrated Acute Services Building on its way to completion and we want to ensure that we incorporate the needs of all campus staff and support your daily commute!

### What do you need to do?

Simply click through to the link during the census period and complete.

### What we want to know:

- How you got to work
- How your experience was
- What could make it better

**It will only take 3 minutes. By completing the census you will win a free coffee or hot drink!**



For more information:

 [randwickcampusredevelopment.health.nsw.gov.au](http://randwickcampusredevelopment.health.nsw.gov.au)

 1800 571 866

T20/57855

 [randwickcampusredevelopment@health.nsw.gov.au](mailto:randwickcampusredevelopment@health.nsw.gov.au)